

NZ



GRAND PACIFIC TOURS

GARDEN



SOUTH ISLAND TOUR



10
UNIQUE
GARDEN
VISITS



11 Day South Island Garden Tour



GUARANTEED departure

2017
Oct 26

ALL INCLUSIVE tour price

Fully escorted including airfares, taxes, modern coach travel, 4 star hotel accommodation, most meals, sightseeing, attractions & 10 unique garden visits.



	Tour including Airfare	Pre Paid Taxes**	Total Per Person Twin Share
Sydney	\$4499	+ \$175	= \$4674
Melbourne	\$4499	+ \$175	= \$4674
Brisbane	\$4499	+ \$175	= \$4674
Gold Coast	\$4499	+ \$175	= \$4674
Canberra	\$4729	+ \$195	= \$4924
Cairns	\$4779	+ \$215	= \$4994
Adelaide	\$4799	+ \$175	= \$4974
Hobart	\$4799	+ \$170	= \$4969
Launceston	\$4799	+ \$170	= \$4969
Perth	\$5049	+ \$170	= \$5219
Land Only			\$4199
Single Supplement			\$1100

Stay a little longer

City	Twin Share	Single
Christchurch	\$120	\$240

Extra night rates are per person in Australian Dollars, based on room only.

Prices are in Australian Dollars. **Prepaid taxes are subject to change. Exact amounts will be confirmed by your travel agent at time of booking.

>> NO HIDDEN EXTRAS

GARDEN VISITS

- Ohinetahi
- Christchurch Botanic Gardens including Caterpillar Tour
- Broadfield Landscape Garden
- Trotts Garden
- Larnach Castle Tour & Gardens
- Dunedin Botanic Gardens
- Wylde Willow Garden
- Queens Park Invercargill
- Chantecler Garden
- Blair Garden

PRE PAID ATTRACTIONS

- Silver Fern Seaside Rail Journey
- Bill Richardson Transport Museum*
- Milford Sound Cruise & Lunch
- Cruise Lake Wakatipu on the TSS Earnslaw
- Lakes District Museum
- TranzAlpine Rail Journey
- City sights tour of Christchurch & Dunedin

*Guided tour is included with 1 guide per 24 travellers.

TOURING

- Return airfares from your homeport
- Modern coach travel with 2 door access, restroom, reclining seats and panoramic windows
- Professional Coach Captain
- Tour Guide
- Personalised Meet & Greet on arrival
- Return airport transfers in New Zealand
- 10 nights 4 star hotel accommodation
- 3 two night stays
- Hotel portage
- 2 cruises
- 2 rail journeys
- All sightseeing and pre paid attractions
- GST (New Zealand Goods and Services Tax)
- Comprehensive documentation pack

MEALS

- 10 cooked breakfasts
- 9 sumptuous dinners including 3 specialty dinners: Haggis Ceremony, Dunedin; Walter Peak Homestead, Queenstown; Farewell Dinner, Christchurch
- 2 lunches
- 3 delicious morning teas

Note: Dinner on Day 1 not included for anyone arriving later than 8pm.

>> ITINERARY

(B) Breakfast, (L) Lunch, (D) Dinner, (SD) Specialty Dinner.

DAY 1: Arrive Christchurch (D)

On arrival into Christchurch you will be met by a Grand Pacific Tours representative and transferred to your hotel. Tonight enjoy dinner at the hotel and meet your fellow travellers.

Hotel Quality Hotel Elms (2 nights)

DAY 2: Christchurch (B,D)

A city tour of Christchurch will highlight why it is fondly referred to as the Garden City, with its tree-lined avenues and large central city parks. First stop is Ohinetahi, designed by two architects and an artist, this formal garden is densely planted with rhododendrons, camellias and a variety of New Zealand natives. Take in the views of Lyttelton Harbour whilst enjoying morning tea. Next travel into Christchurch for a tour of the historic Botanic Gardens on the unique all-weather electric vehicle. Commentary is provided as you view native & exotic flora. This afternoon visit Broadfield Landscape Garden where the Kauri forest is planted with over 100 trees.

DAY 3: Christchurch - Dunedin (B,D)

Depart Christchurch and travel to Trotts Garden, set on 7 acres, where you will relish the formal detail of roses planted in set squares, the buxus edgings, knot garden the long deep perennial borders. Enjoy morning tea in the formal garden before heading south to Dunedin, known as the 'Edinburgh of the South'.

Hotel Scenic Hotel Southern Cross (2 nights)

DAY 4: Dunedin Sightseeing (B,SD)

This morning travel along the beautiful Otago Harbour to Larnach Castle for a guided tour of both the Castle & the garden, rated a Garden of International Significance. Enjoy Devonshire Tea in the grand ballroom, whilst the owner & creator of this incredible property share's her story of vision and passion. Return to the city to spend time at leisure at the Dunedin Botanic Gardens, a highlight is the Rhododendron Dell. This afternoon board the Silver Fern Railcar for a journey along spectacular clifftops overlooking the Pacific Ocean and Blueskin Bay. On return to Dunedin's historic Edwardian Railway Station, board the coach for your transfer to the hotel. Tonight a Scottish evening will be presented comprising of bagpipes, great food, Haggis Ceremony and gift.

DAY 5: Dunedin - Invercargill (B,L,D)

This morning visit Wylde Willow Garden, located in a beautiful, tranquil country setting that features a cottage garden & hundred year old willows. Continue south through the rugged coastline of the Catlins and enjoy a picnic lunch enroute. In Invercargill, enjoy time at leisure at Queens Park, a mecca for those who enjoy the natural and the planned, where the numerous gardens and botanic attractions provide vibrant displays whatever the season.

Hotel The Ascot Park Hotel



DAY 6: Invercargill - Te Anau (B,D)

This morning visit the Bill Richardson Transport Museum for a tour of this amazing private collection. Housed in a purpose built Art Deco building you will be immersed back to the 19th century. Displays include vintage trucks, rare classic cars, petrol pumps as well as an ever growing showcase of wearable arts. Continue to Te Anau, the gateway to Fiordland. Tonight after dinner you may like to visit the Te Anau Glow Worm Caves (optional).

Hotel Distinction Luxmore (Deluxe Rooms)

DAY 7: Te Anau - Milford Sound - Queenstown (B,L)

Depart Te Anau for a fascinating drive to Milford Sound where you board your launch for a cruise on this magnificent fiord. See the spectacular Bowen Falls and towering Mitre Peak as you enjoy a picnic lunch. This afternoon travel to Queenstown, overlooking magical Lake Wakatipu. Spend the next two nights at this year round resort which offers a wide range of activities and attractions. This evening is free and you may choose to dine out at one of the many fine restaurants.

Hotel Copthorne Hotel & Resort (2 nights)

DAY 8: Queenstown (B,SD) 🌸

This morning enjoy time exploring two of the region's finest private gardens. Chantecler features plantings from around the world making it a garden for all seasons, whilst Blair Garden is a beautifully presented garden, where impressive vistas to the surrounding picturesque mountainous landscape can be found from many vantage points. Enjoy some free time this afternoon to explore Queenstown at leisure. This evening board the vintage steamship TSS Earnslaw and cruise across

Lake Wakatipu to Walter Peak Station. Sit back, relax and enjoy a gourmet barbecue dinner which the chef will prepare in front of you at the Colonel's Homestead. After dinner enjoy a short farm tour then reboard the TSS Earnslaw for a sing along by the piano as you cruise back to Queenstown.

DAY 9: Queenstown - Arrowtown - Franz Josef (B,D)

Travel to Arrowtown and visit the Lakes District Museum. Continue via the Haast Pass to the mighty West Coast, an area of stunning beauty. See the snow capped peaks of the Southern Alps as you travel north to Fox Glacier. Time is available (weather permitting) to experience a scenic flight (optional) over the spectacular glaciers.

Hotel Scenic Hotel Franz Josef Glacier (Douglas Wing)

DAY 10: Franz Josef - Arthur's Pass - Christchurch (B,SD) 🚂

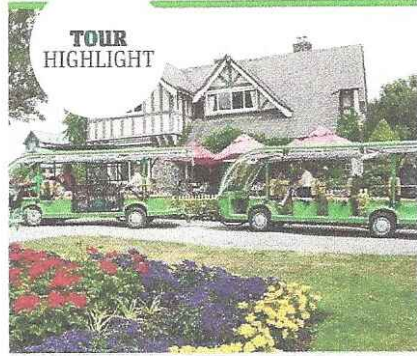
Travel to Hokitika and visit the Greenstone Factory. Continue into Arthur's Pass and board the TranzAlpine, renowned as one of the great train journeys of the world. View rivers and valleys as you travel through the Waimakariri Basin, over massive viaducts and through the patchwork farmlands of the Canterbury Plains to the elegant city of Christchurch. On arrival your coach will be waiting to transfer you to your hotel. This evening enjoy a farewell dinner with your new found friends.

Hotel Sudima Christchurch Airport Hotel

DAY 11: Depart Christchurch (B)

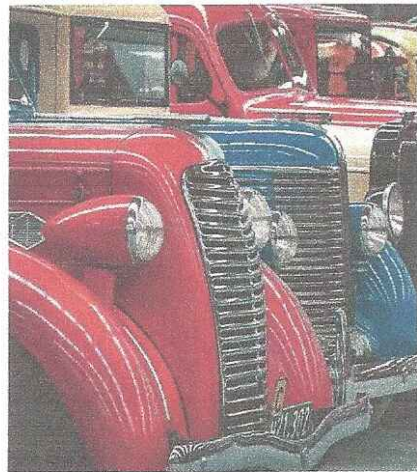
Time to say goodbye. You will be transferred to the airport for your flight home after a memorable New Zealand holiday.

TOUR HIGHLIGHT



10 unique garden visits

Nowhere in the world will you find such a diverse range of plant varieties, both native and exotic, so easily accessible to the visitor. Included in your tour are visits to an array of unique South Island gardens all given the prestigious title of either *International*, *National Significance* or *Significant Garden*, a title awarded to gardeners considered to be outstanding for their horticultural value in plant material, cultivation, design, and maintenance. Meet these local gardeners who will share with you their love of what they grow and how they grow it.



TOP TO BOTTOM: Ohinetahi, one of Canterbury's well known gardens; Bill Richardson Transport Museum will take you back to 19th century; meet like-minded travellers who share your passion for gardens.



Travel in style Merchandise

Make sure you look the part when on tour. Our groups look fantastic when they are all wearing their jackets and caps. Both products offer great value.

TOUR JACKET Unisex black waterproof shell jacket with embroidered logos, silver reflective piping, fleece lined collar, hood, inside mesh, adjustable Velcro cuff, double front and inside pockets, hidden draw cord and mobile phone pocket. Compact, lightweight, ideal for touring. Available in sizes XS to XXXL. Price \$69

TOUR CAP Black wool blend cap with pre curved suede peak, six panel structure with fabric Velcro strap and embroidered logo. One size. Price \$25

Purchase both items for \$85. Normally \$94. Order at time of booking.

BOOKING TERMS AND CONDITIONS

Payment and completion of the Booking Form to your Travel Agent acknowledges that you have read, understood and accepted these booking conditions. Grand Pacific Tours is a 100% Australian owned company.

For a full list of booking conditions please refer to the Grand Pacific Tours website at www.grandpacifictours.com

Deposits & Payment At the time of booking a deposit of \$200 per person is required. If the Tour Package includes flights, a further deposit to cover the airfare and taxes is also required at time of booking. The balance of payment, including any merchandise, is due 60 days prior to departure.

Airfares The airlines require all Trans Tasman flight bookings to have the air ticket issued within five days of confirmation of the airline reservation. As Grand Pacific Tours offer a fully inclusive package price, the dollar difference between 'Land Only' price and 'Package Price' does not represent the airfare deposit amount due. Enquire with your Travel Agent as to the exact amount of airfare deposit and taxes required at the time of booking. Surcharges may apply over peak travel times.

Airline Frequent flyer points are only issued on certain fare classes. Please check at time of booking.

Airline Indemnity Airlines carry no responsibility for any statement in this brochure relating to the ground content of the tours. These airlines act as air carriers only. Grand Pacific Tours indemnifies the airlines against any claim, action, loss or damage that may arise.

Prices All holiday prices are based on schedules, fares and tariffs current at the time of printing. Grand Pacific Tours reserves the right to vary the cost of tours if necessary by reason of currency fluctuation, component cost increase or airfare cost. Tour costing will be guaranteed at the price prevailing at the date of final payment.

The Australian pre paid taxes are subject to change. Exact amounts will be confirmed to your Travel Agent at time of booking.

Luggage Limits Each traveller is entitled to take one suitcase, the sum of its length, width & depth not to exceed 140cm. Weight limits apply to luggage due to Occupational Health and Safety issues. The maximum allowed by most airlines and Grand Pacific Tours is one piece up to 23kg. Luggage over this allowance will be charged by the airline at the applicable rate. If a traveller brings more than the allocated limit of luggage, any additional arrangements made to get their luggage to final destination will be at travellers own expense. The Grand Pacific Tours travel bag is designed to carry a maximum of 5kg. Due to limited space on board the coach, please ensure carry-on bags do not exceed this limit. Check with your Travel Agent for more details.

Hotel Information Grand Pacific Tours endeavours to utilise the most suitable hotels available in each location to ensure travellers enjoy a level of cleanliness, comfort & service. In more remote locations, hotel standards may not be as high due to limited choice. Should the hotels on tour change for any reason, we will endeavour to ensure that the alternative hotel is of an equivalent standard.

Pre / Post Accommodation in New Zealand If early hotel check-in or late check-out is required due to late flight schedules, additional accommodation will need to be purchased. The rates quoted in this brochure are only valid for one night and room only. Any additional meals will need to be ordered and purchased

directly with the hotels. BS rates cannot be provided. Additional nights may be charged at the prevailing rate by the hotel.

Room & Dietary Requests Grand Pacific Tours limit special dietary requests to Vegetarian, Gluten Free, Lactose Intolerant & Diabetic. These will be requested to the hotel but cannot be guaranteed. Any further tolerances needing to be managed are the responsibility of the traveller. Airlines have restricted dietary conditions which vary, ask at time of booking. Room requests can be submitted and requested but not guaranteed.

Single Travellers Smoking and special room requests are not permitted in the Single to Twin share rooms. Single to Twin bookings are subject to the individual's medical condition being suitable for this type of arrangement. If someone is not compatible with the person they have been matched up with, any additional costs incurred to assist with changing their room type will be at the traveller's expense.

Coach Seat Rotation For the enjoyment of all travellers Grand Pacific Tours operates a daily seat rotation system which all travellers must participate in as a condition of booking.

Travel Insurance Comprehensive Travel Insurance is not included but is strongly recommended for all travellers. Speak to your local Travel Agent to arrange this.

Cancellations / Transfer of Booking In the event a traveller cancels off a tour the following fees apply prior to departure:

- 60 days or more prior to departure, loss of deposit plus the cost of the airline ticket if issued.
- Between 7 and 59 days prior to departure, 50% of the tour package price.
- Less than 7 days prior to departure, 100% of the tour package price.

If a traveller wishes to cancel their existing booking and transfer to a new departure date, the above cancellation fees still apply.

Health and Fitness Payment of deposit by traveller(s) to Grand Pacific Tours acts as a warranty that the traveller(s) are reasonably healthy and/or fit to participate in the tour and the traveller(s) indemnifies Grand Pacific Tours from all actions, claims and demands arising out of any want of health and fitness. Grand Pacific Tours reserves the right to remove a traveller from a tour if their health and/or fitness interferes with the tour or other traveller(s) tour experience in any way. Travelling with a collapsible wheelchair is subject to availability at the time of booking as each tour only has the capacity to cater for one wheelchair traveller.

Responsibilities Grand Pacific Tours advises that the service it provides is for the booking and packaging of goods and services provided by other operators such as cruise ships, hotels and transportation companies. Travellers are advised to familiarise themselves with the terms and conditions on which these services are supplied. Accordingly, Grand Pacific Tours will not be responsible and will be excluded from liability for any loss, damage, omission or acts being negligent or otherwise, committed by the operators of airlines, cruise ships, coach companies, hotels or attractions used in connection with the tours.

Optional Tours Grand Pacific Tours are to be booked with the coach captain whilst on tour. Grand Pacific Tours does not operate these excursions. As such, no person employed or associated with Grand Pacific Tours has any connection with the operators of these excursions. Accordingly, Grand Pacific Tours cannot and do not take any responsibility for any injury, action, loss or damage of any type, arising in any manner from these excursions.

Documentation Grand Pacific Tours documentation including any merchandise will be made available for collection at the first night hotel. The traveller(s) is / are responsible for the acquisition of passports and appropriate visas, where necessary. We recommend that such documents, as required by governments, are finalised at least six weeks prior to the date of departure. Laundry bag and local wallet are one per couple.

Transfers Airport transfers in New Zealand are included. They will not be included if travellers have pre or post tour accommodation booked outside the Tour Hotels. Transfers provided surrounding pre and post tour dates must directly link to the tour and cannot be used on a broken stay. On arrival in New Zealand, the transfer vehicle will wait up to 1 hour after the flight lands. If your flight is delayed or changes please contact Grand Pacific Tours.

Refund Please note that no refund shall be made for any unused portion of any itinerary. Any alteration to the holiday, made by a traveller(s), shall be wholly at the expense of that traveller(s).

Holiday Duration The first and last day of most structured holidays is considered a travelling day and therefore may not necessarily be a whole day.

Special Offers Only one special offer is applicable per booking. Senior Card membership numbers must be provided at time of booking for the discount to apply. Senior Card and Prabus member offers are not applicable on certain tours. There will be no retrospective discounts. Please check at time of booking.

Force Majeure Except where otherwise expressly stated in these booking conditions we regret that we cannot accept liability or pay any compensation where the performance of our contractual obligations is prevented or affected by reason of circumstances amounting to 'force majeure'. In these booking conditions, 'force majeure' means any event which we or the supplier of the service(s) in question could not, even with all due care, foresee or avoid. Such events may include war or threat of war, riots, civil strife, terrorist activity, industrial dispute, natural or nuclear disaster, adverse weather conditions, fire and all similar events outside our control.

Internet Most hotels have internet access available. Not all hotels offer free Wi-Fi, charges may apply. Grand Pacific Tours do not have any influence over hotel Wi-Fi access and related costs.

General Conduct Grand Pacific Tours reserves the right to remove a traveller from a tour if they are acting in a way that interferes with the general operation of the tour or compromises the general enjoyment of the tour by other travellers in any way.

Validity Brochure valid for travel from October 2017.

MERCHANDISE

All prices are inclusive of GST. All purchases must be made with your Travel Agent at time of booking. Payment for all merchandise is due with final tour payment prior to departure. Merchandise will not be sold once on tour or after travellers return home. Merchandise will only be delivered with Tour Documentation two weeks prior to departure. Postage and handling is included with original order. Jacket can be exchanged, subject to an additional \$10 per jacket, postage and handling fee. Refer to the website for jacket sizes.